

62nd Annual Asphalt Paving Conference



February 27-28, 2018

**FireKeepers Casino Hotel
11177 E. Michigan Avenue
Battle Creek, MI 49014**

*ASPHALT
PAVEMENT
ASSOCIATION
OF
MICHIGAN*



Tuesday, February 27, 2018

Registration: 11:00 am - 7:00 pm

Exhibits Open: 12:00 - 7:00 pm

Education Sessions: 1:30 - 5:00 pm

Welcome Reception: 5:00 - 7:00 pm

Conference Sponsors:

(1.19.18)

Reception

AIS Construction Equipment

Breakfast

AIS Construction Equipment
Michigan Paving & Materials Co.
Stoneco of Michigan

Break

Cadillac Asphalt, LLC

Platinum

Bit-Mat Products of Michigan
Michigan CAT
Ontario Trap Rock
Rieth-Riley Construction Co., Inc.

Gold

Astec, Inc.
CWMF Corporation
Edw. C. Levy
Give Em' A Break Safety

Silver

Dillon Energy Services

Educational Sessions

1:30 - 2:15 pm

Asphalt Pavement Alliance Update (.75 CEC hours)

Speaker: Dan Staebell, North Central Regional Director - Asphalt Pavement Alliance

The ten state North Central Region of the APA is working together to develop and deploy focused initiatives to inform pavement owners and specifiers about the superior benefits of asphalt pavements. Mr. Staebell will discuss the details of what the APA is doing to maintain asphalt pavements as the preferred choice for quality, performance and the environment, and offer his insights on why asphalt is the best paving material.

2:15 - 3:00 pm

Best Mix Design Practices to Maximize Quality and Pay (.75 CEC hours)

Speaker: Timothy R. Murphy, P.E., President, Murphy Pavement Technology, Inc.

The mix design is the foundation of a quality asphalt paving project. Mr. Murphy will discuss important factors and considerations for designing and producing mixes which will meet pavement performance expectations and also ensure full payment to the contractor. Also, learn the proper methods for taking advantage of the cost savings from using RAP.

3:00 - 3:30 pm Break: Visit the Exhibit Hall for refreshments!

3:30 - 4:15 pm

Best Practices for Residential and Commercial Paving (.75 CEC hours)

Speakers: Geoff Eddie, Weiler, Midwest Territory Manager
Nigel McKay, Weiler, Sales Manager

In addition to meeting the structural requirements of the pavement design, the commercial paver must provide surfaces that are smooth, aesthetically pleasing and drain well. Good planning and excellent paving practices must be employed to overcome the challenge of building a pavement to meet, in some cases, extreme geometric and grade constraints. This session will cover the principles of quality construction and the best practices to ensure high quality, long lasting commercial and residential pavements.

4:15 - 5:00 pm

Paving and Milling Control Technology (.75 CEC hours)

Speaker: Kevin Ackley, SITECH Michigan, Eastern Region Technical Sales Manager

The use of paving control technology for asphalt paving screeds and mill drums can assist in providing smoother, longer lasting roads. As the demands on our infrastructure are increasing, it's become critically important that contractors adopt technology to maximize quality and smoothness while minimizing construction costs and shortening the time required to complete projects. The appropriate solution depends on the needs of the contractor and the specifications of the project. Learn how both 2D and 3D machine control technology can make good work practices even better.



Welcome Reception: 5:00 - 7:00 pm

Join us for hors d'oeuvres and cocktails, courtesy of our sponsors! This is a great opportunity to visit the exhibits and enjoy networking with industry friends and associates!

Wednesday, February 28, 2018

Registration: 7:00 - 10:00 am

Breakfast/Exhibits: 7:15 - 8:45 am

General Session: 9:00 - 10:30 am

Exhibits Open: 10:30 am - 2:00 pm

Educational Session: 11:00 - 11:45 am

Lunch: 12:00 - 1:00 pm

MDOT Update: 1:00 - 2:00 pm

Important Conference Information

Registration Information:

APAM Member: \$160.00

Non Members: \$180.00

Onsite: \$190.00

FireKeepers Room Block Deadline:

February 2, 2018

Group Code: 022718ASPH

Room Rate: \$119.00

Online or 877.352.8777

Continuing Education Credits: (CEC)

Sessions will count towards these credits. You are responsible for signing the session sheets at each session in order to receive credit. 4.75 hours available if all sessions are attended.

Registration, Sponsorship, Exhibit

Forms: www.apa-mi.org home page (under "APAM Events and Happening")

Questions: Contact Beth Wilson @ bwilson@apa-mi.org or 517.323.7800



2937 Atrium Drive, Suite 202
Okemos, MI 48864
517.323.7800 or 800.292.5959
www.apa-mi.org

General Session

9:00 - 10:30 am

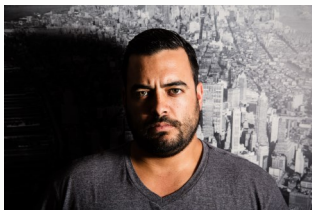
MDOT Perspective

Speaker: Kim Avery, P.E., Bureau of Field Services, Director
Michigan Department of Transportation



Ms. Avery will offer insight into the challenges and opportunities facing the Department and the industry in 2018.

Keynote Address: Chad Williams, former Navy SEAL



"7 Leadership Takeaways from a Navy SEAL"

Chad Williams served his country proudly through multiple deployments on SEAL Teams One and Seven. Having been a featured guest on Fox News Channel, CNN News Room, Anderson Cooper 360 and more, today Chad is a bestselling author and an in demand keynote speaker. Drawing from his experiences as a SEAL, Chad captivates his listeners as he illustrates and instructs the SEAL mindset and ethos that involve: mental toughness, discipline, teamwork, leadership, safety and motivation.

Educational Sessions

11:00 - 11:45 am

Complying with OSHA's Silica Rule (.75 CEC hours)

Speaker: Howard Marks, Ph.D., Vice President for Environment, Health & Safety - National Asphalt Pavement Association

With OSHA's new Silica Rule for roadway construction activities now being enforced, companies must be knowledgeable of the potential for exposure to silica associated with common roadway construction activities. Dr Marks will provide the latest information on how to comply with the rule. In June 2018, the Silica Rule for general industry comes into effect, which will have an impact on asphalt mix production facilities. Find out how what activities might be affected and learn the steps needed to ensure compliance at the plant.



1:00 - 2:00 pm

MDOT Update (1.00 CEC hour)

Speakers: Kevin Kennedy, HMA Operations Engineer
Bill Wahl, Associate Region Engineer, Operations

HMA specification updates and their impact on the Asphalt industry. MDOT's new prequalified maintenance contracting process will be discussed.

Please note session topics, times and speakers subject to change.