

APAM 2023 ANNUAL CONFERENCE

Audrey Copeland

President & CEO

National Asphalt Pavement Association

February 21, 2023

The Challenges

*...along an evolving
Road*

- **Climate, Environment, & Social**

- Developing benchmarks and changing requirements

- **Highway Investment**

- Getting the most from Infrastructure Funding
- Looming risk for Highway Trust Fund

- **Workforce**

- Raising the profile of the industry

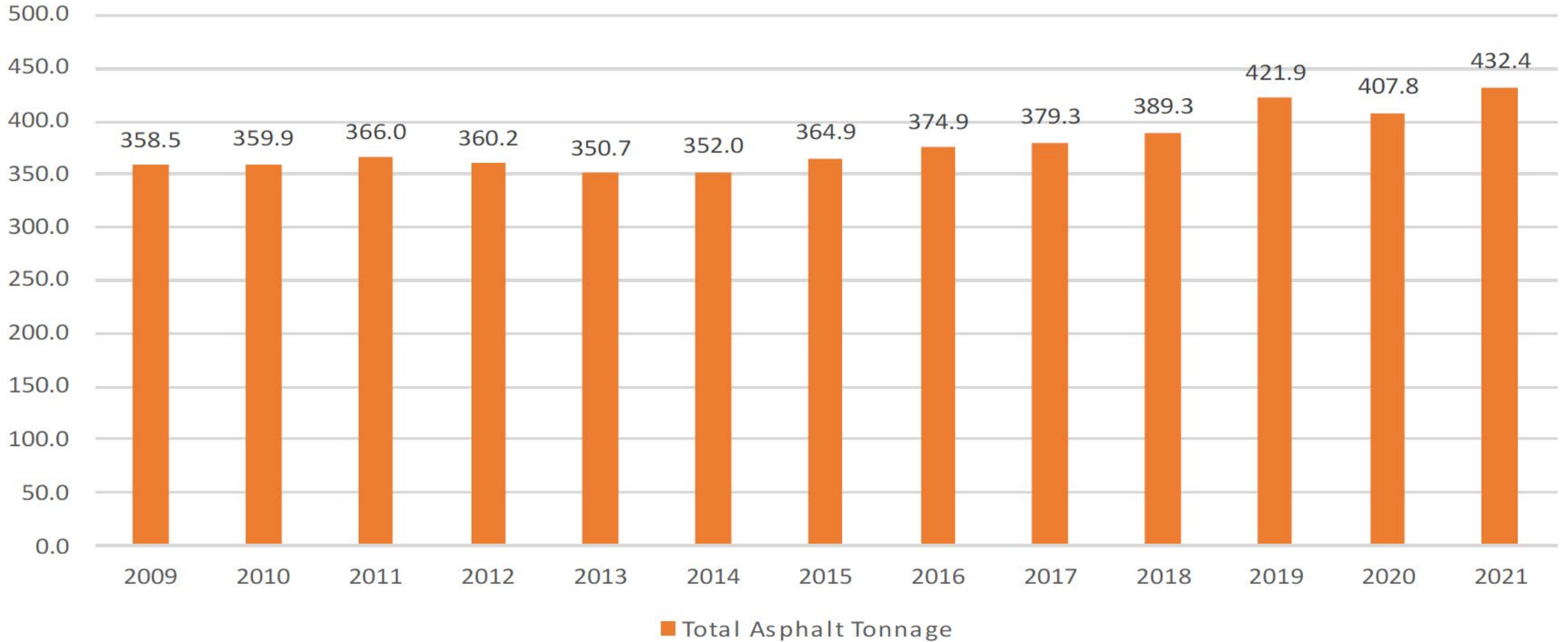
QUANTIFYING IMPACT



Emerald
ECO LABEL

Developing EPDs
helps us
understand what
levers to pull to
reduce emissions
and costs.

ESTIMATED TONNAGE, 2009-2021



PAVING CREWS



PLANT CREWS/QC



EVERYONE HAS A ROLE TO PLAY



OWNERS & MANAGERS

DOTs

CLIMATE LEADERSHIP

The Road Forward



A Vision for Net Zero Carbon Emissions
for the Asphalt Pavement Industry





Our mission:

To advance the asphalt pavement industry through leadership, stewardship, and member engagement.

Our vision:

Sustainable transportation infrastructure that paves the way for thriving communities and commerce.

2023-2025 NAPA Strategic Plan Pillars

LEADERSHIP

Foster increased Federal investment

Advocate for and achieve fair, competitive, science-based legislation and policies

Be the trusted, go-to organization for members, decision makers, and stakeholders

STEWARDSHIP

Champion the advantages of asphalt pavements

Shepherd the industry's commitment to net zero carbon emissions pavement

Demonstrate members' commitment to value and excellence

MEMBERSHIP

Engage and grow membership

Facilitate member advancement

Improve and streamline association governance and operations

CLIMATE LEADERSHIP

The Road Forward



A Vision for Net Zero Carbon Emissions
for the Asphalt Pavement Industry



OUR CLIMATE STORY

Positive impacts of RAP use, 2009-2021

GHG emissions from



5,575,907

Passenger vehicles
driven for one year

CO₂ emissions from



3,013,030

homes' energy use
for one year

CO₂ emissions from



2,903,116,912

gallons of gasoline
consumed

CO₂ emissions from



59,732,454

barrels of oil
consumed

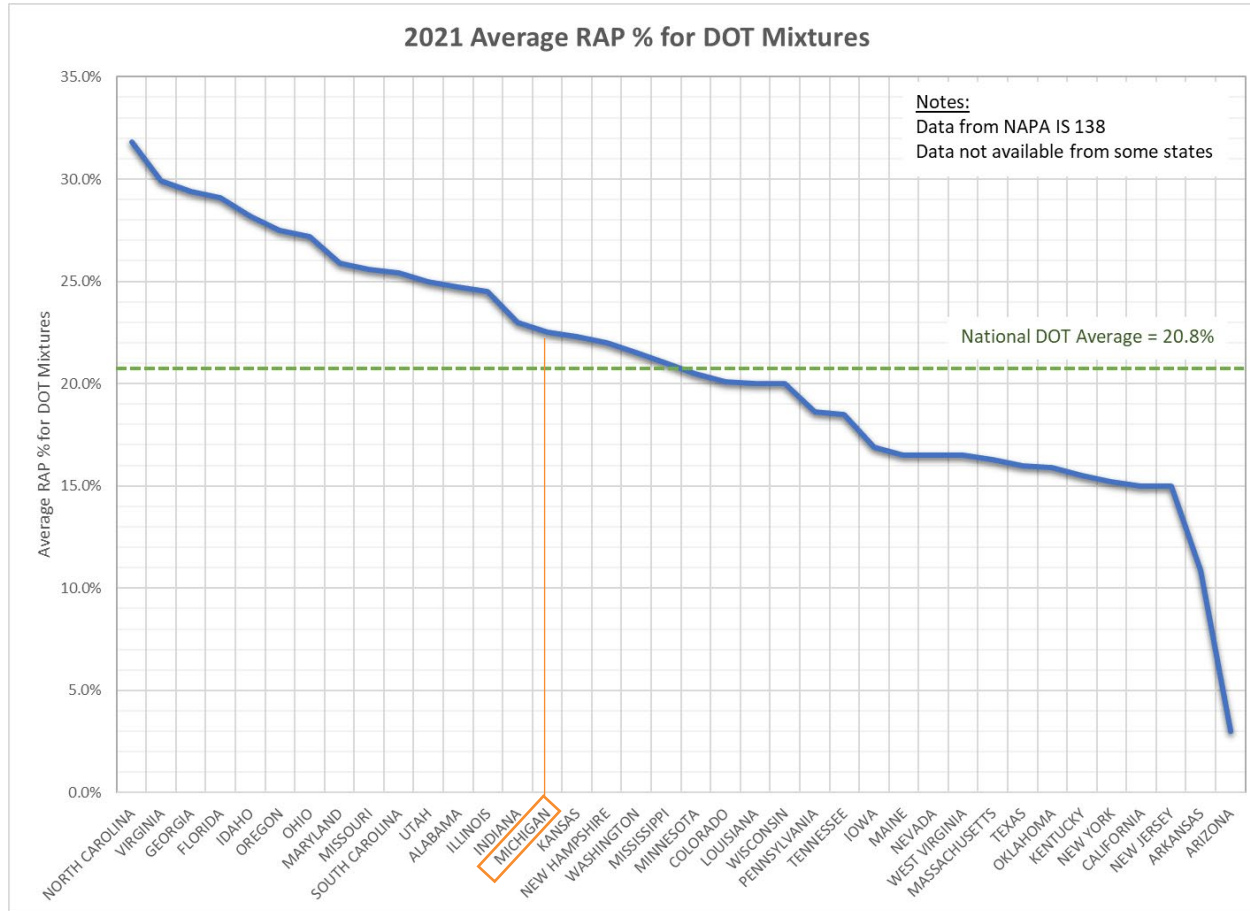
Carbon sequestered by



33,226,025

acres of U.S. forests
in one year

RAP: One Simple Step



Increasing RAP by
1% nationwide
=
GHG emissions from



25,132
Passenger vehicles
driven for one year

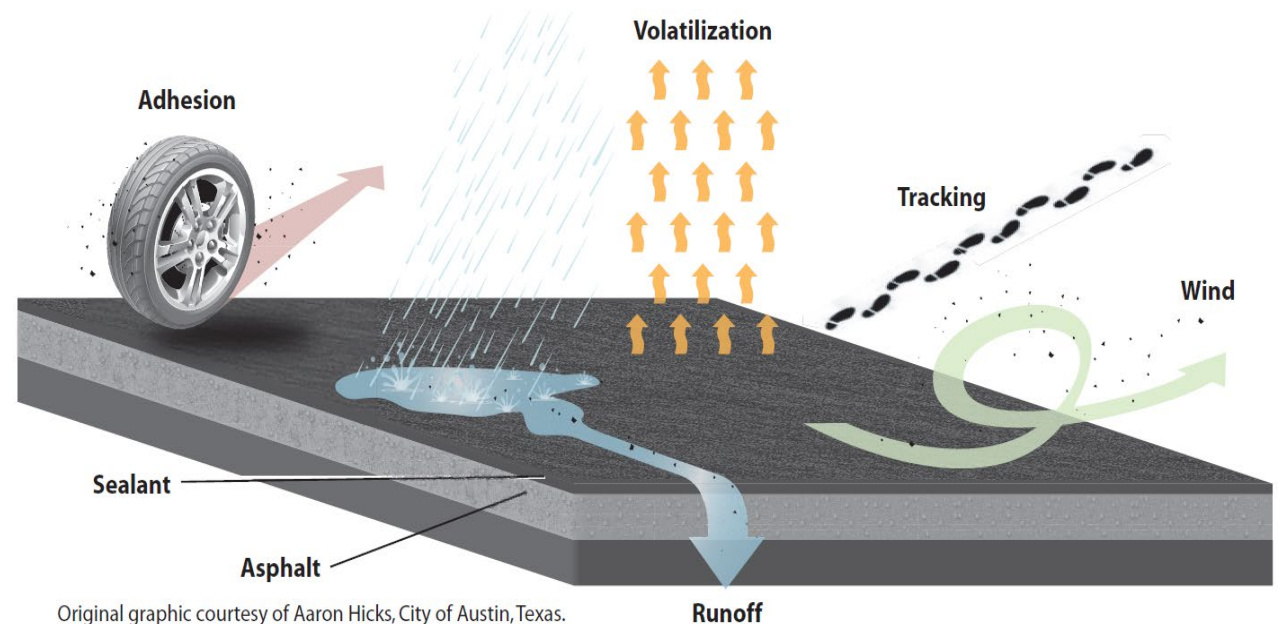


Achieving Our Goals

Environment, Health & Safety

ENVIRONMENT

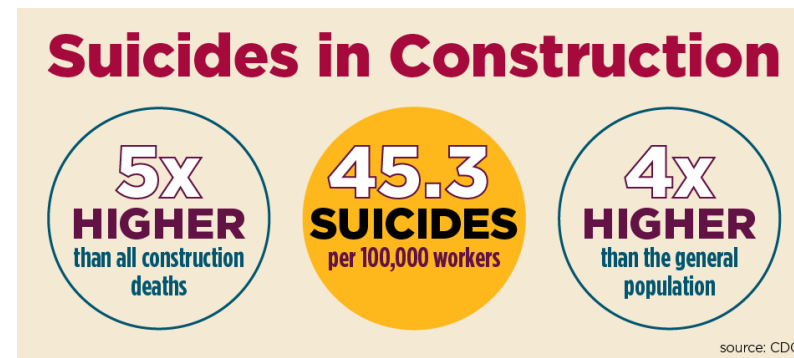
- Yale & Florida State
- Zoning & Permitting
 - Environmental Justice
- Stormwater Runoff
- Upcoming EPA Rules
 - Ozone, NO_x, PM_{2.5}



Original graphic courtesy of Aaron Hicks, City of Austin, Texas.

HEALTH & SAFETY

- Heat Illness Prevention
- Work Zone Safety
- Mental Health Awareness
- Silica Rule





Achieving Our Goals

Workforce Development

CAREER OPPORTUNITIES

Learn more about the asphalt pavement industry's career opportunities including qualifications, physical requirements, average national salary, and length of time before promotion by selecting your skill level below and learning more.



OFFICE



ENTRY-LEVEL



SEMI-SKILLED



ENTRY-LEVEL SKILLED



MID-LEVEL SKILLED



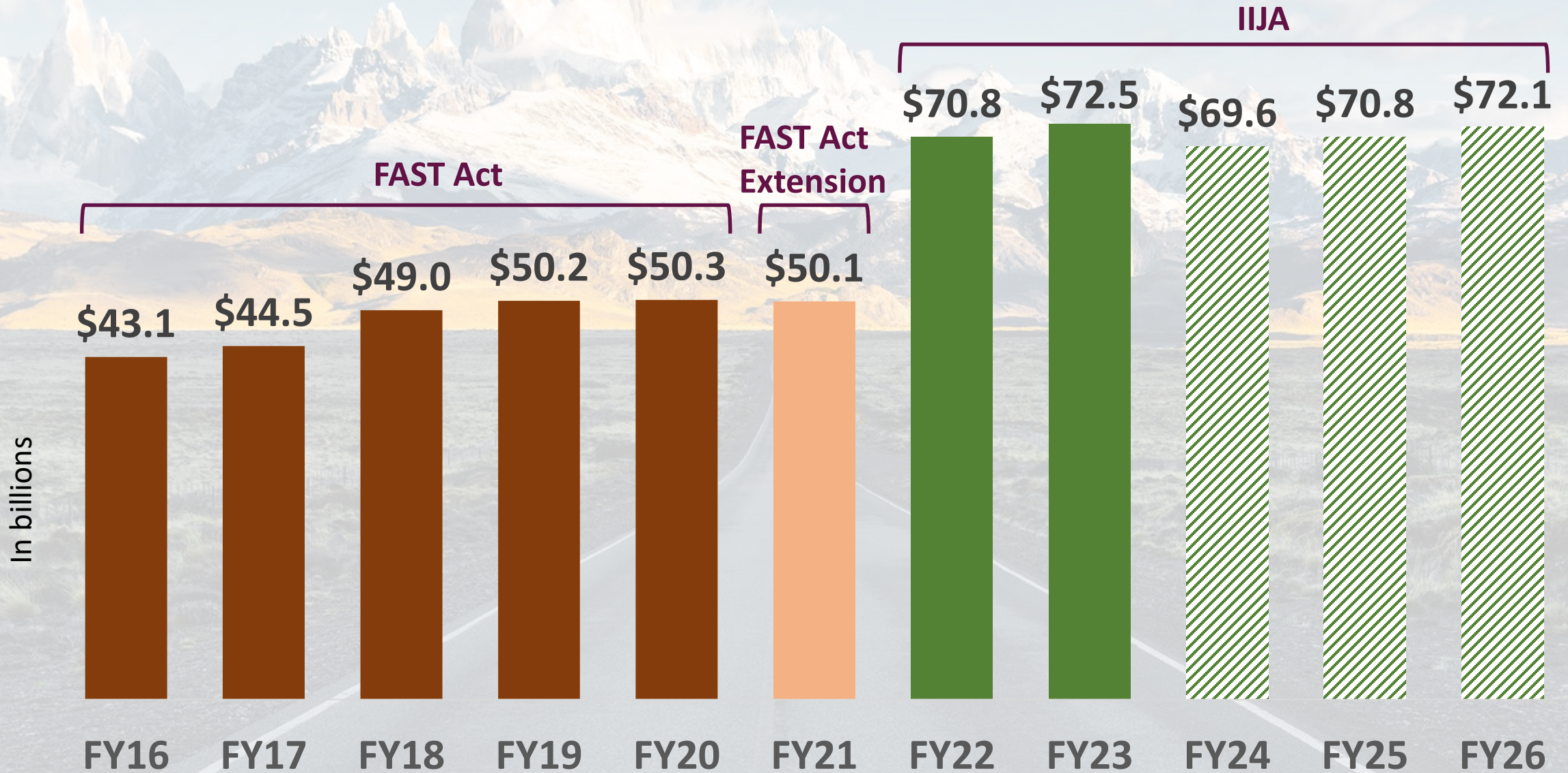
UPPER-LEVEL SKILLED

AsphaltPavement.org/Careers

A photograph of construction workers in high-visibility vests operating machinery on a construction site. The scene is set against a bright blue sky with scattered white clouds. The workers are positioned on a large pile of dark material, possibly asphalt or gravel, with a long line of machinery extending into the distance. The overall atmosphere is one of active construction work.

IIJA, IRA, & FUTURE FUNDING

Federal Highway Funding Boost



Highway & Pavement Contract Awards Up!



State & Local Government Highway & Pavement Contract Awards

Source: American Road & Transportation Builders Association

Short-Term Challenges

New Congress, New Priorities

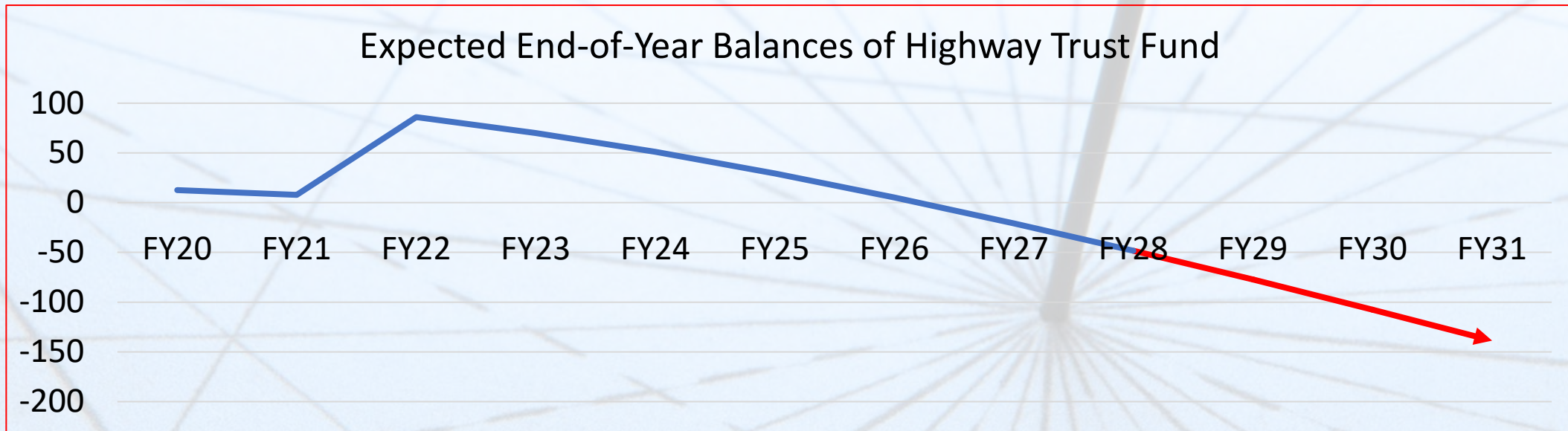
- Few House GOP Members voted for IIJA
- House rules call for 50-year budget freeze
- Threats to cut gas tax continue

How Will New House GOP Majority Deal with Important Legislative Agenda?

- Debt-limit increase
- Annual appropriation bills
- Reauthorize FAA Programs

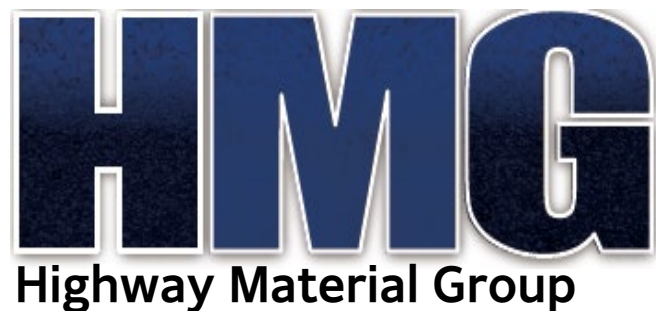
Long-Term Risks

- The \$9.5 billion in annual advanced appropriations from the general fund authorized in IJA ends in FY 2026
- Highway Trust Fund will be running on fumes at the end of IJA



Source: Eno Transportation Weekly

Coalitions Strengthen NAPA's Advocacy Program



*Act like your
job depends
on it!*



Join NAPA's Advocacy Membership!



NAPA PAC

**NATIONAL ASPHALT PAVEMENT ASSOCIATION
POLITICAL ACTION COMMITTEE**

<https://www.asphaltpavement.org/expertise/advocacy>

YOUR VOICE ON CAPITOL HILL



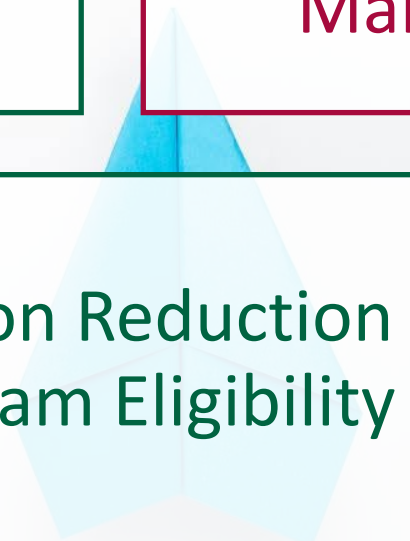
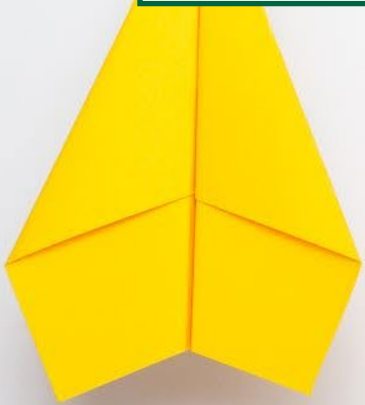
Infrastructure
Funding

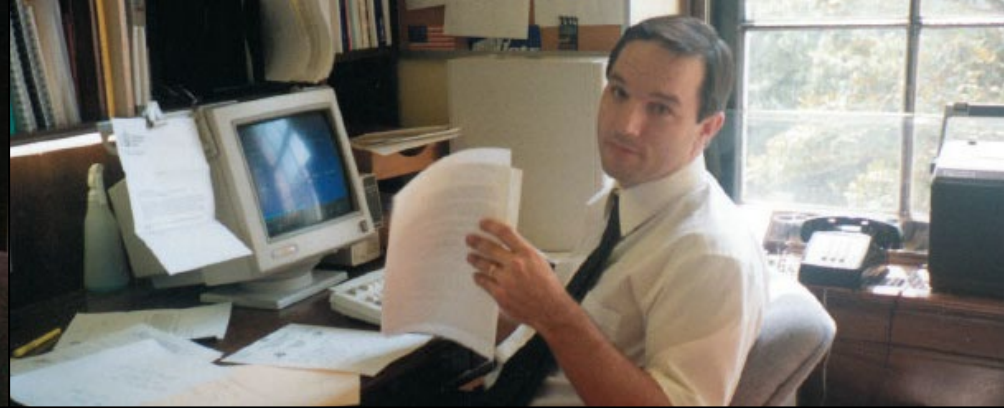
Asphalt Pavement
Research

Defeated
Pavement
Mandates

Buy America
Exemption

Carbon Reduction
Program Eligibility





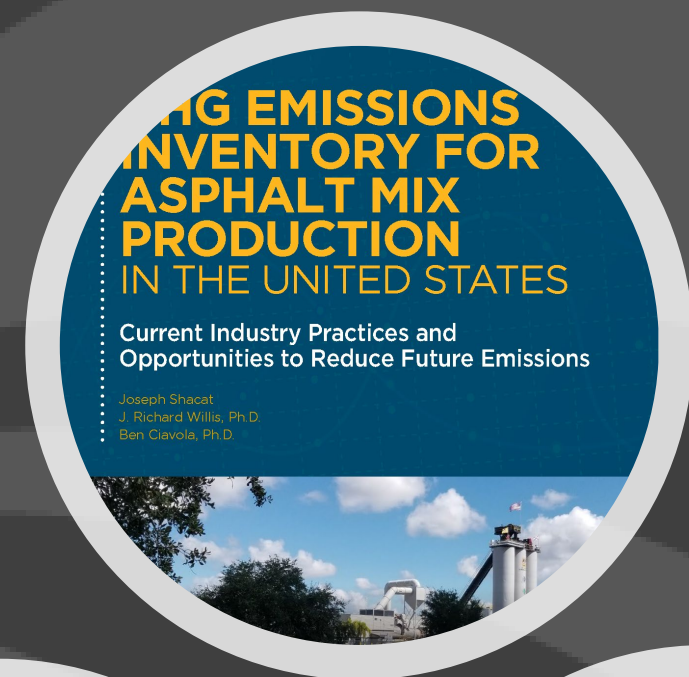
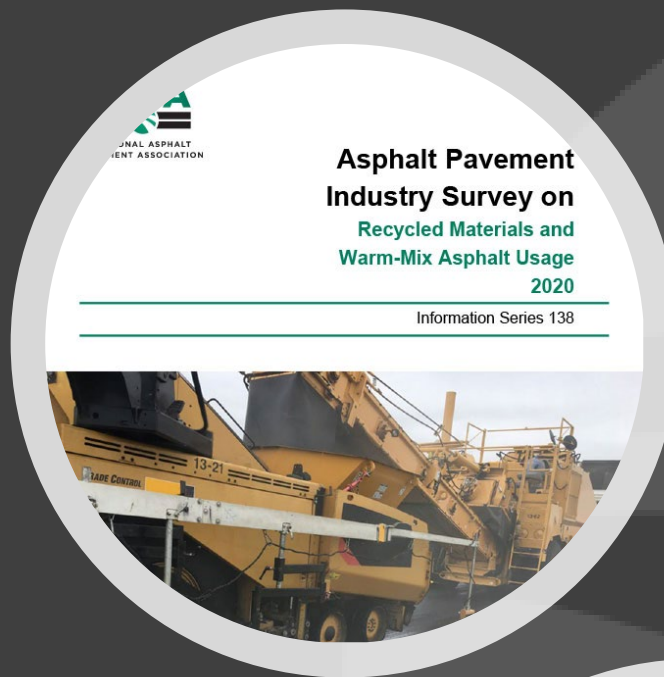
NAPA PROFESSIONAL STAFF



Nile Elam
VP Government Affairs



Jean-Paul Fort
Director
Pavement Innovation & Technology

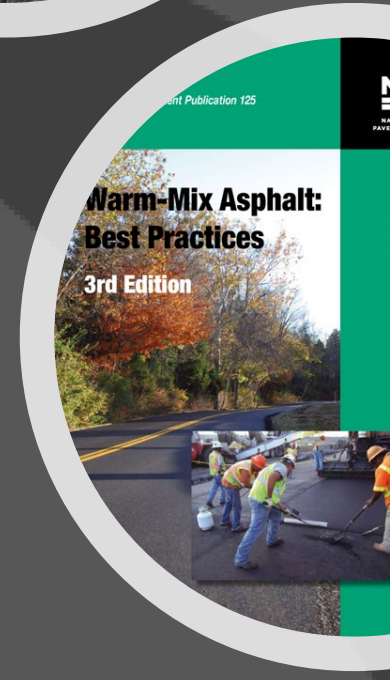


Expertise at Your Fingertips

Publications: Member.AsphaltPavement.org/Shop

Webinars: AsphaltPavement.org/Webinars

Staff & More: AsphaltPavement.org/Expertise





NAPA 

RESEARCH AND EDUCATION
FOUNDATION

501c3



Asphalt Industry Scholarships



NAPA



**NATIONAL ASPHALT
PAVEMENT ASSOCIATION**

501c6

APA ASPHALT
PAVEMENT
ALLIANCE



Partners fund,
led & managed by NAPA



NAPA PAC
NATIONAL ASPHALT PAVEMENT ASSOCIATION
POLITICAL ACTION COMMITTEE

Segregated fund



NAPA

RESEARCH AND EDUCATION
FOUNDATION

2022
SCHOLARSHIPS



\$314,100

113 Students



\$7,500

BENEFIT

2 Families

HELPED IN 2022

45 Families

SUPPORTED SINCE
THE PROGRAM BEGAN

APA ASPHALT PAVEMENT ALLIANCE



DriveAsphalt.org

FLEXIBILITY

When It Comes to Flexibility... Asphalt Performs

Asphalt is flexible, adaptable, versatile, customizable, and ready to meet just about any need. With the option of nighttime construction and without the lengthy curing times of concrete, asphalt pavements offer the flexibility needed to handle all levels of traffic volume and to be installed or repaired quickly.

INNOVATION

Designed for Any Application

The asphalt industry innovations continue to afford asphalt pavement as the most economical, efficient, and environmentally friendly pavement. Asphalt engineers are constantly innovating to make roads perform for today and the future. The asphalt industry is committed to workforce training and to scientifically analyzing pavements to ensure the best products.

[LEARN MORE](#)

SUSTAINABILITY

Asphalt: The Sustainable Material

Asphalt is the pavement of choice for sustainability.

Asphalt is 100 percent reusable and recycled at a higher rate than any other material in America — including soda cans and newspaper. In fact, 94 percent of asphalt reclaimed from old roads and parking lots goes back into new pavements.

[LEARN MORE](#)

VALUE

Asphalt Roads Offer Superior Value

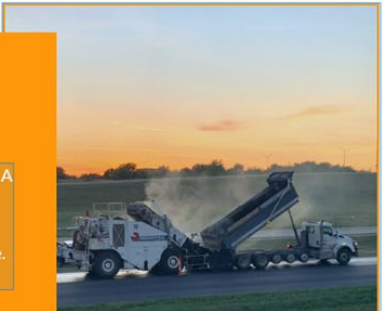
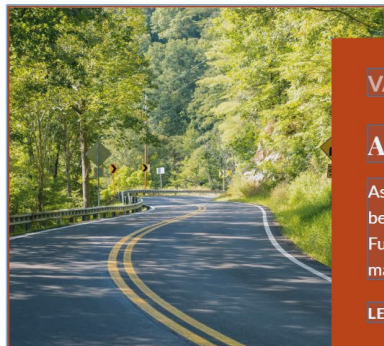
Asphalt's life-cycle costs are low, in part because the structure of asphalt pavement doesn't have to be replaced. Well-maintained asphalt roads can last indefinitely and never need to be reconstructed. Further, it's recently been shown that new asphalt pavements last 18 years on average without maintenance.

[LEARN MORE](#)

ASPHALT DELIVERS

...for your budget, community, and the future

Asphalt pavements deliver the performance that agencies, designers, owners, and drivers demand. A solution for the entire transportation network, asphalt is a completely recyclable material that delivers a safe, smooth, quick-to-construct pavement optimized for costs, community, and environment. Asphalt roads are proven solutions that work for your budget, community, and future. Paving with asphalt delivers immediate benefits today while looking out for tomorrow.



Thank you, Michigan!

Gold Club (50+ Years)

- Ace-Saginaw Paving Co.
- Ajax Paving Industries
- Cadillac Asphalt LLC, A CRH Co.
- Rieth-Riley Construction Co. Inc.

Members

- Angelo Iafrate Construction Co.
- Detroit Stoker Co.
- Edward C. Levy Co.
- J. Rettenmaier USA LP
- Kalin Construction Co., Inc.
- Maxx Services, LLC

30-Plus Club

- Asphalt Paving Inc.
- Bacco Construction
- Bolen Asphalt Paving
- Central Asphalt Inc.
- Maxx Services LLC
- Payne & Dolan Inc., a Walbec Group Co.
- Michigan Paving & Materials, a CRH Co.
- Plante Moran
- SME
- Superior Asphalt Inc.
- Warner Petroleum Corp.
- Zep, Inc.

State Advisor: James Klett, Michigan Paving & Materials, a CRH Co.



NAPA Quality in Construction 2022 Award Winners



LARRY H. LEMON AWARDS

Gerken Paving Inc.

M-50 in Adrian, Mich.

Payne & Dolan Inc., a Walbec Group Co.

M-48 in Chippewa County



HIGHWAY

Cadillac Asphalt LLC, A CRH Company

General Motors Milford Proving Grounds

Vehicle Dynamic Test Area

Michigan Paving & Materials Co., A CRH Company

US 31 in Holland



AIRPORTS

Cadillac Asphalt LLC, A CRH Company

Willow Run Airport Runway 9/27 in Ypsilanti



GENERAL PAVING

Ajax Paving Industries Inc.

Ford Dearborn Development Center High Speed

Straightaway and Steering and Handling Tracks in Dearborn

I-375 in Detroit

Rochester Road Near Rochester Hills

Whitmore Lake Road in Brighton

Cadillac Asphalt LLC, A CRH Company

Burr Oak Subdivision in Ann Arbor

Currie Road in Northville

General Motors Milford Proving Ground Noise Pass-By Road

M-50 in Dundee

Maple Road in Troy

Merriman Road in Livonia

Pontiac Trail in West Bloomfield

Michigan Paving & Materials Co., A CRH Company

I-94 EB in Van Buren County

Rieth-Riley Construction Co. Inc.

CR 612 in Crawford County

I-96 in Kent County

M-37 in Traverse City

Michigan State Police Precision Driving Facility



ENGAGED FOR SUCCESS

2022 ANNUAL REPORT

NAPAAnnualReport.org

NAAPA



**NATIONAL ASPHALT
PAVEMENT ASSOCIATION**